



K1
 Pč= 500 m²
 kig 0.25 = 125 m²
 GBPnadz.= 250 m²

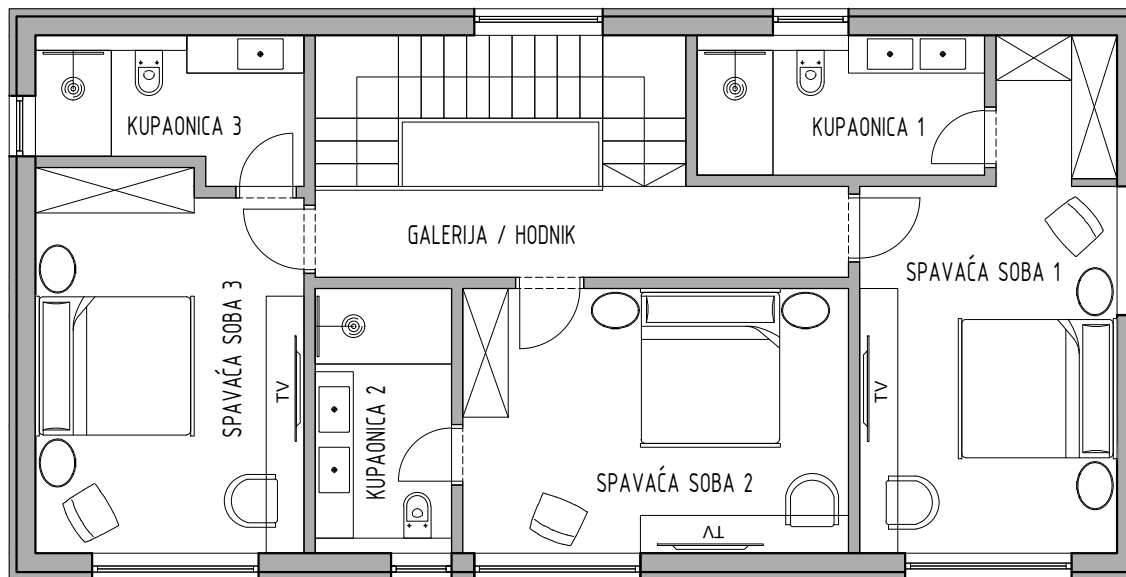
K2
 Pč= 500 m²
 kig 0.25 = 125 m²
 GBPnadz.= 250 m²

K3
 Pč= 543 m²
 kig 0.25 = 135 m²
 GBPnadz.= 270 m²

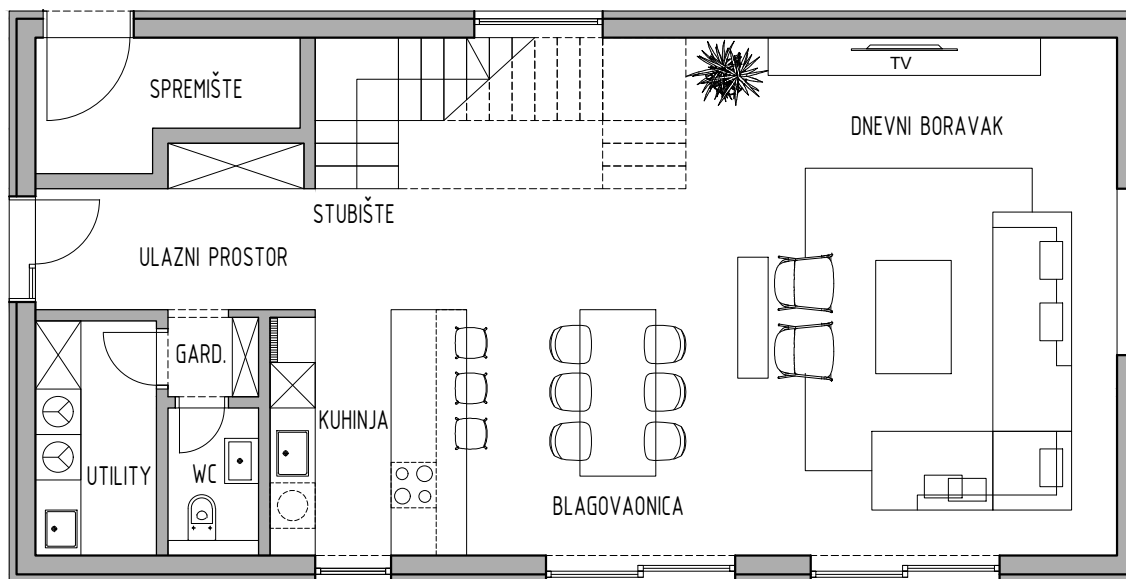
K4
 Pč= 568 m²
 kig 0.25 = 142 m²
 GBPnadz.= 234 m²

K5
 Pč= 544 m²
 kig 0.25 = 136 m²
 GBPnadz.= 272 m²

U Dobrinju, 1. 10. 2018.



KAT



PRIZEMLJE

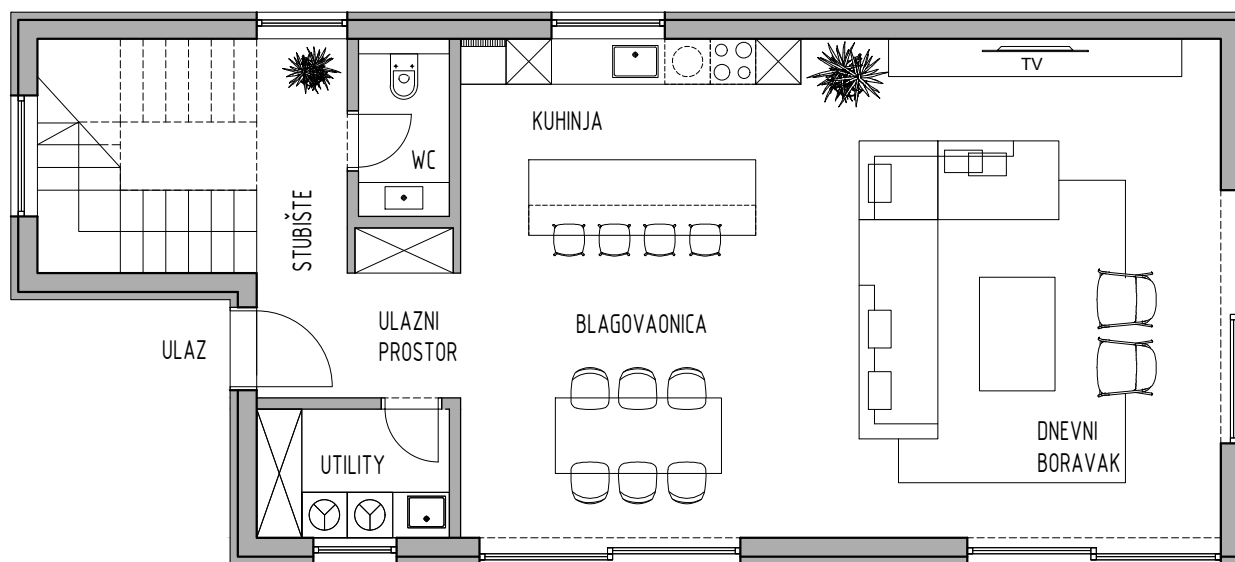
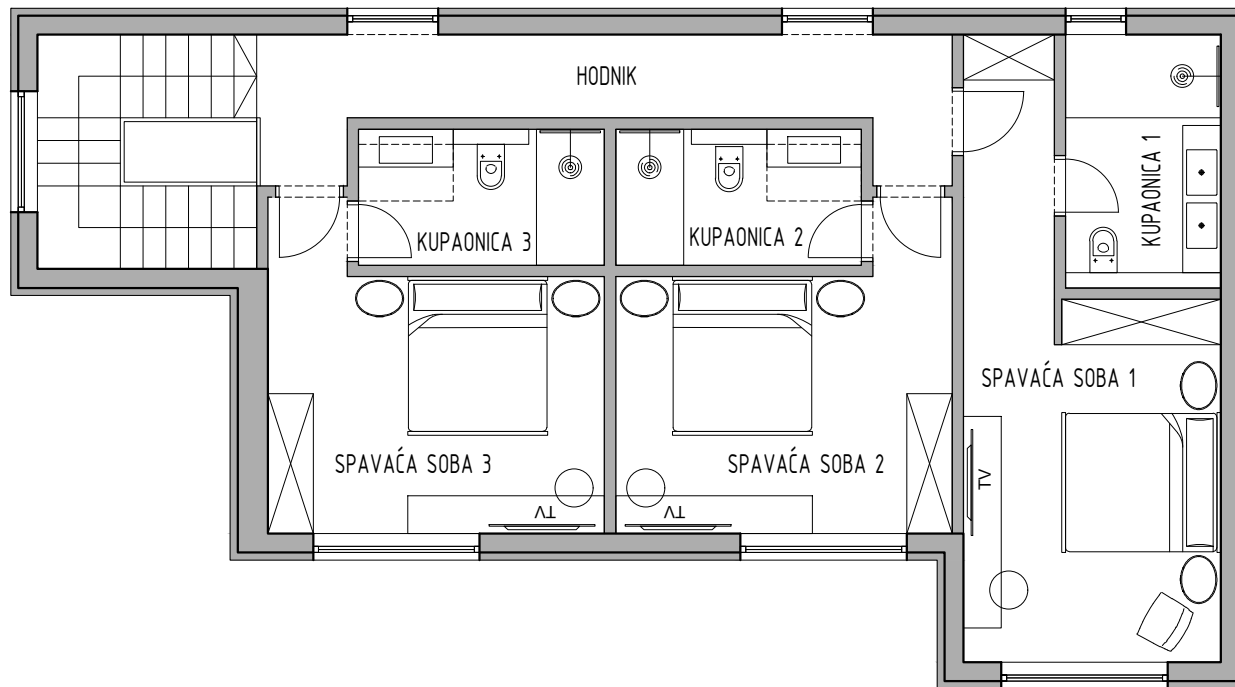
kuća K1 / K2
 P (tlocrtna) = 113,00 m²
 GBP = 226,00 m²

Sadržaj:
 MALINSKA
 KUĆA K1 / K2 - TLOCRTI

Datum:
 29.03.2023.

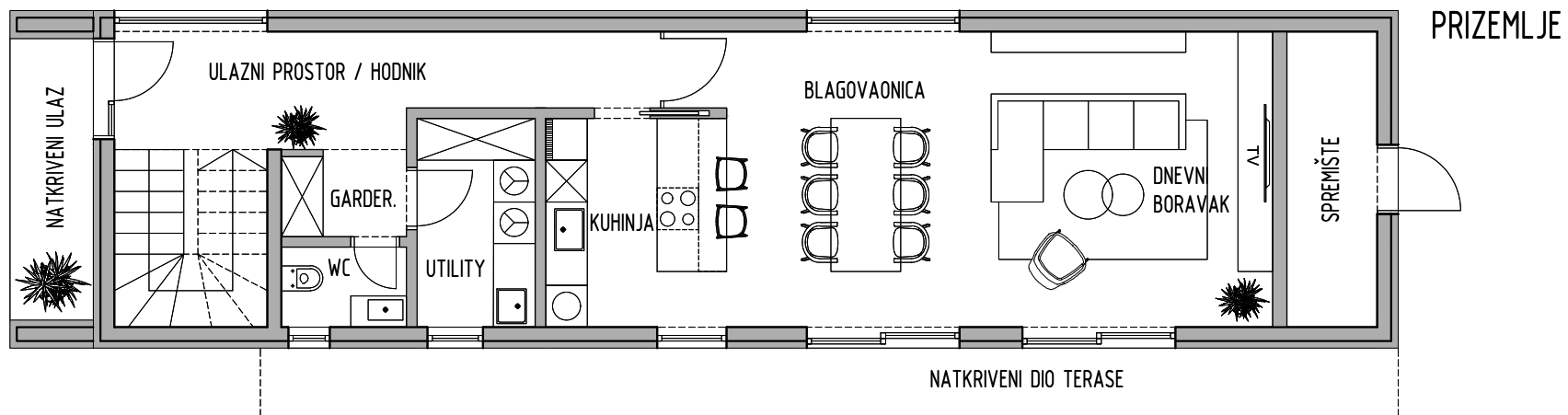
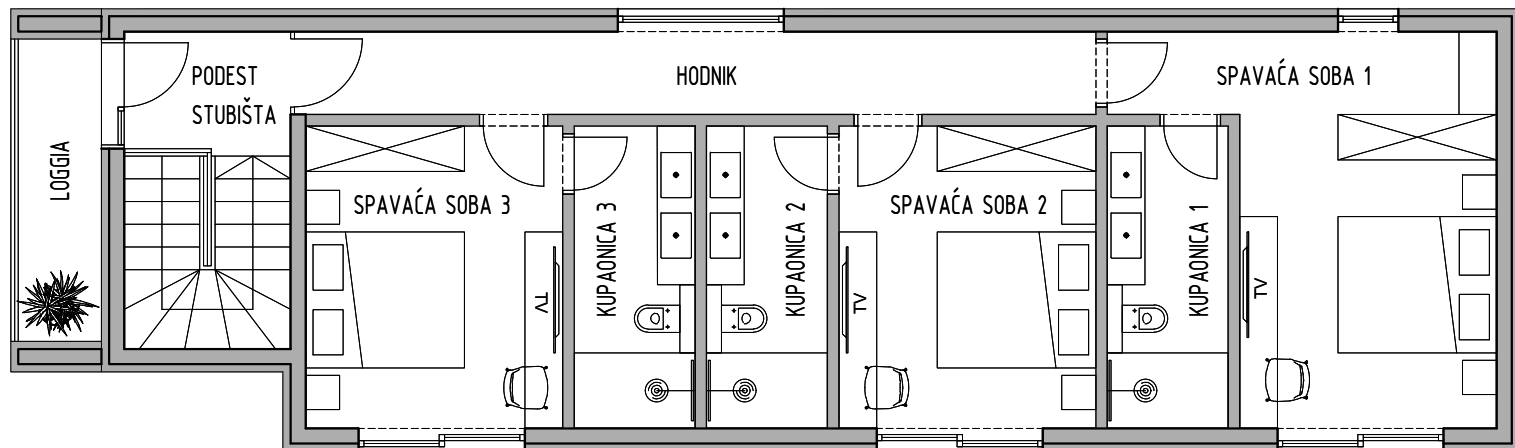
Mjerilo:
 1:100

List:



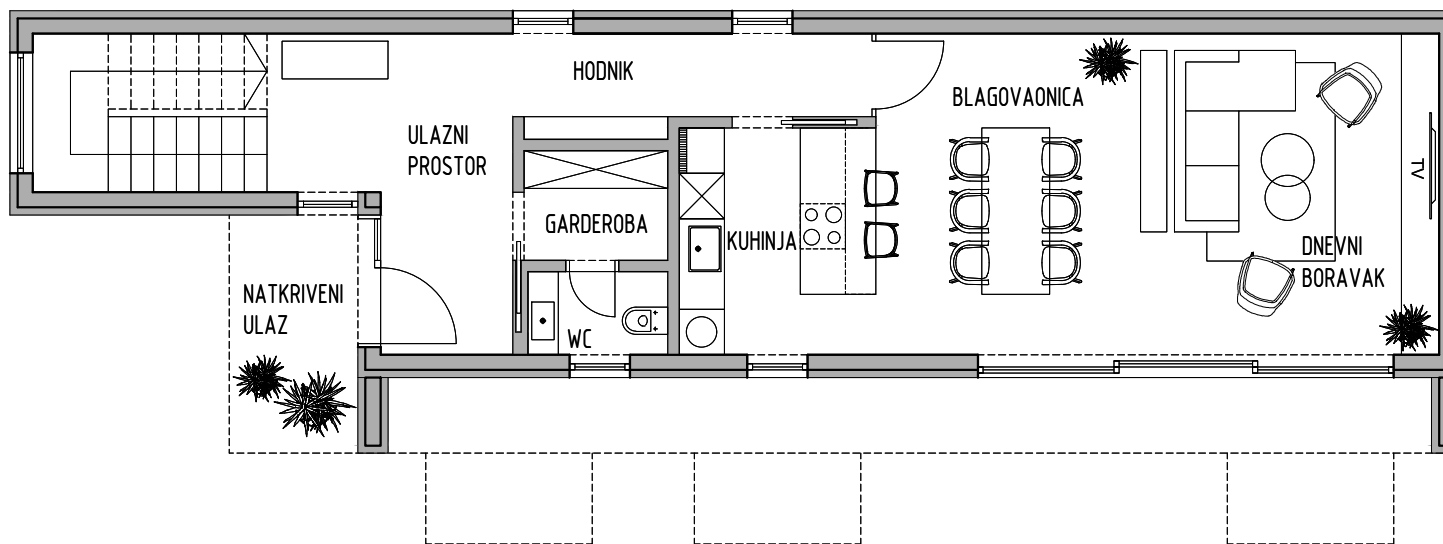
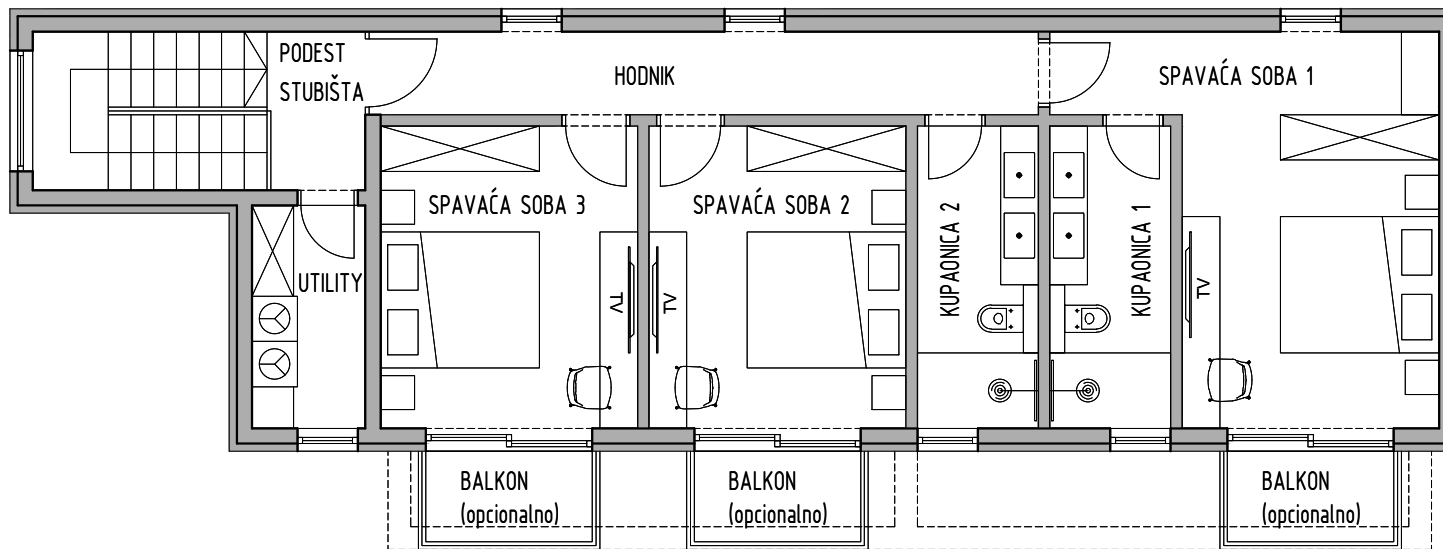
kuća K3
 P (tlocrtna) = 116,00 m²
 GBP = 226,00 m²

Sadržaj: MALINSKA KUĆA K3 - TLOCRTI	Datum: 29.03.2023.	Mjerilo: 1:100
		List:



kuća K4
 P (tlocrtna) = 112,92 m²
 GBP = 198,10 m²

Sadržaj: MALINSKA KUĆA K4 - TLOCRTI	Datum: 29.03.2023.	Mjerilo: 1:100
		List:



kuća K5
 P (tlocrtna) = 103,18 m²
 GBP = 186,42 m²

Sadržaj: MALINSKA KUĆA K5 - TLOCRTI	Datum: 29.03.2023.	Mjerilo: 1:100
		List: